

INSTALLATION INSTRUCTIONS

ITEM NO: NB-MT

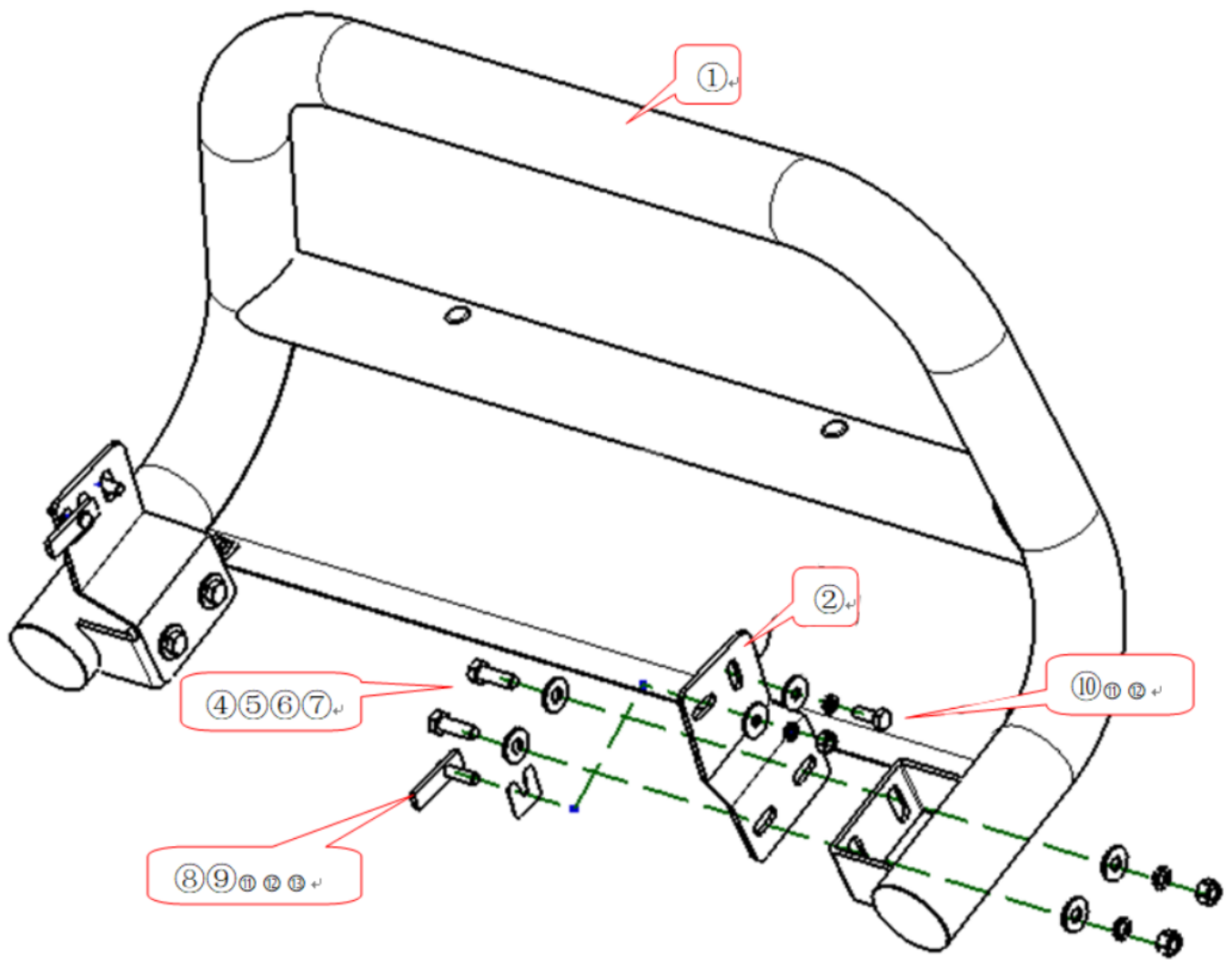
DESCRIPTION 3" Nudge bar ML MN 2006-15

- Please read the installation instructions before installing this accessory. Take care to protect your vehicle and prevent any scratches during installation.
- To ensure ongoing safe use, you may need to periodically re-tighten all hardware after installation.
- Installation pictures are only for your reference. There may be some differences between pictures and parts. These will not affect the fitting.

PART LIST

NO.	NAME	QTY	REMARK	NO.	NAME	QTY	REMARK
①	Bull Bar	1		⑧	T Bolt	2	M10*35
②	Bracket 1 (right)	1		⑨	Plastic Fixture	2	Φ10
③	Bracket 1 (left)	1		⑩	Hexagon Bolt(fine thread)	2	M10*25
④	Hexagon Bolt	4	M12*35	⑪	Large Washer	4	φ10*30*2.5
⑤	Extra Large Washer	10	φ12*30*3.0	⑫	Spring Washer	4	φ10
⑥	Spring Washer	4	φ12	⑬	Hexagon Nut	2	M10
⑦	Hexagon Nut	4	M12				

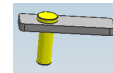
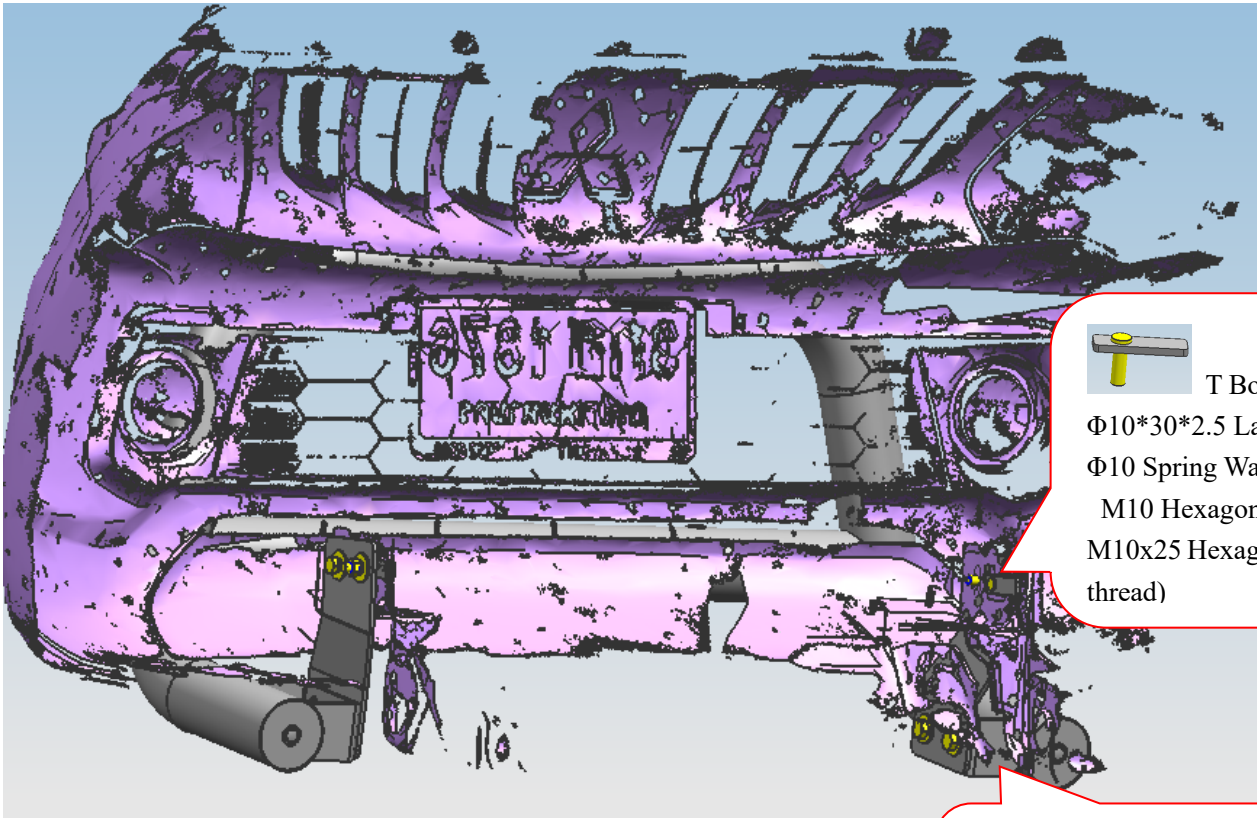
INSTALLATION PICTURE



INSTALLATION PROCEDURES

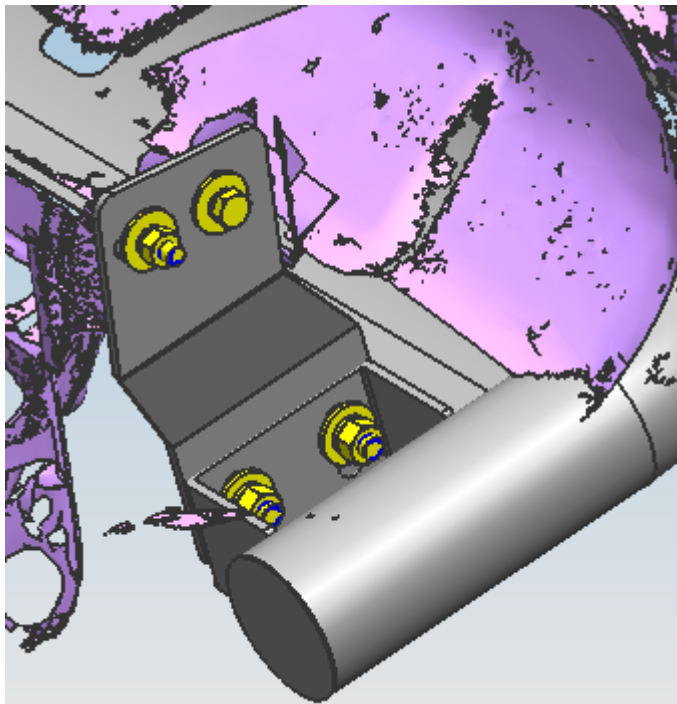
Step 1: Refer to Part List and Installation Picture to check that all hardware is included.

Step 2: Refer to the following picture to install all brackets.



T Bolt

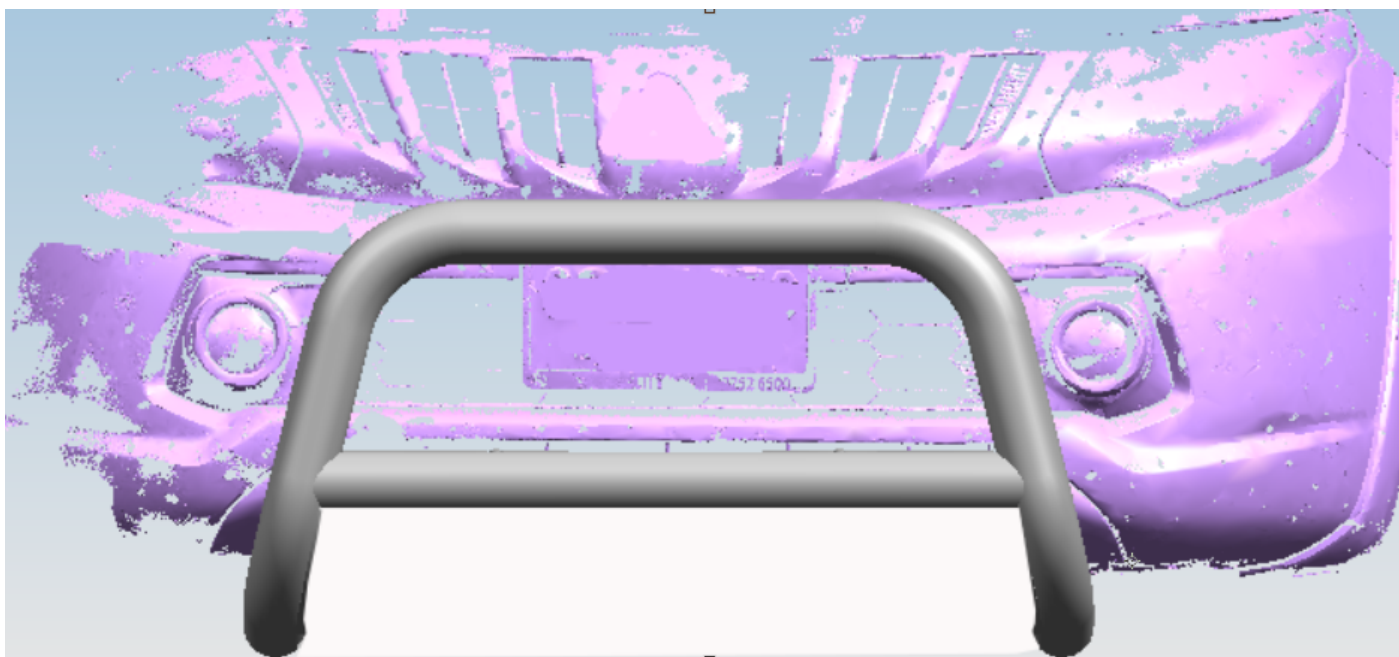
$\Phi 10 \times 30 \times 2.5$ Large Washer
 $\Phi 10$ Spring Washer
 M10 Hexagon Nut
 M10x25 Hexagon Bolt(fine thread)



M12x35 Hexagon Bolt
 $\phi 12 \times 30 \times 3.0$ Large Washer
 $\phi 12$ Spring Washer
 M12 Hexagon Nut

Step 3: Install the brackets as shown in the image above and adjust to the correct position.

Step 4: Check all hardware has been fitted correctly and then tighten.



Disclaimer: Any issues or losses related to incorrect installation are beyond our company's quality assurance.